

Description

Media

Fail freeze

Second loop

Supply voltage

Impedance

Monitor signal

Electrical connection

Power consumption

Linearity / Hysteresis

Temperature influence

Temperature range

Material

Proportional pressure regulator with closed loop control technology for better control of pressurised gases. The instrument can be built as single closed loop or dual closed loop control valve.

dry, lubricated or unlubricated and 5 µm filtered compressed air or non-corrosive gases

constant outlet pressure at voltage drop

0 ... 10 V, impedance 4.7 kΩ,

15 ... 24 V DC, residual ripple < 10%, with reverse voltage protection

0 ... 10 V / 4.7 kΩ, 4 ... 20 mA / 100 Ω,

0 ... 10 V at max. 10 mA

terminal strip for 2.5 mm²

3.6 W regulating, 0.5 W non-regulating

< 0.15% FS

< 1% FS at 0 °C to 50 °C / 32 °F to 122 °F

0 °C to 70 °C / 32 °F to 158 °F

Ports:

brass

Transducer: aluminium and silicon

Air consumption

Repeatability

Adjustment

Mounting position

Elastomer:

Valves:

without constant bleed

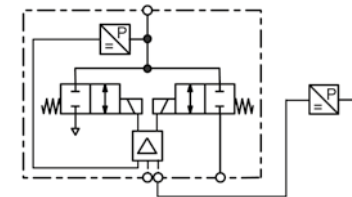
< 0.02 FS

zero point and span

any, vibration-resistant

FKM

nickel-plated brass



with single or double loop

Dimensions			Flow rate	Supply pressure	Accuracy	Connection thread	Pressure range	Order number	E*
A	B	C	l/min*1	max. mbar/bar	%	G	mbar/bar		
mm	mm	mm							

Proportional press. regulator

0-10 V input and monitor signal, supply voltage 24 V DC, fail freeze, single loop for DIN rail

PM

56	78	54	35	10 mbar	0.2	G1/8	0 ... 5 mbar	PM1DE-A5
				20 mbar			0 ... 10 mbar	PM1DE-B1
				200 mbar			0 ... 100 mbar	PM1DE-C1
				1 000 mbar			0 ... 600 mbar	PM1DE-C6
56	78	54	35	2 bar	0.2	G1/8	0 ... 1 bar	PM1DE-01
				3 bar			0 ... 2 bar	PM1DE-02
				9 bar			0 ... 4 bar	PM1DE-04
				9 bar			0 ... 6 bar	PM1DE-06
				15 bar			0 ... 10 bar	PM1DE-10
56	78	54	35	2 bar	0.2	G1/8	0 ... -1 bar	PM1DE-V0
				2 bar			-1 ... +1 bar	PM1DE-V1

Special options, add the appropriate letter

double loop

4-20 mA

flow 100 l/min

panel mounting

mounting for manifolds

second loop feedback 0 ... 10 V
supply signal, jumper selectable command
increased flow rate
on plane level
connections downwards

PM2

PM . . I . .

PM HF

PM . P . . .

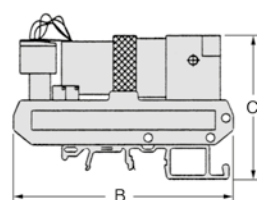
PM . M . . .

Accessories, enclosed

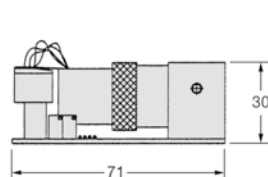
manifold block

for 2 to 7 valves

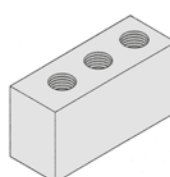
number of valves added to order number **SBM-**



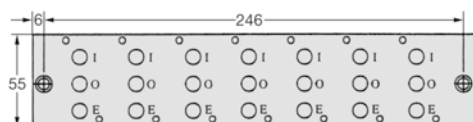
PM . D for DIN rail



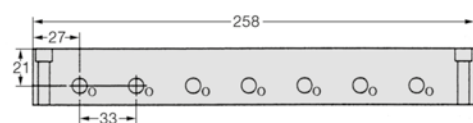
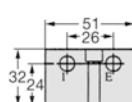
PM . P for panel mounting



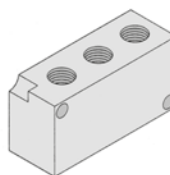
PM . D for DIN rail



PM . M for manifold block



manifold block for 2 to 7 valves



PM . P for panel mounting



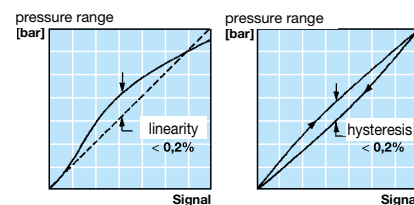
PM . D
DIN rail mounting



PM . P
panel mounting

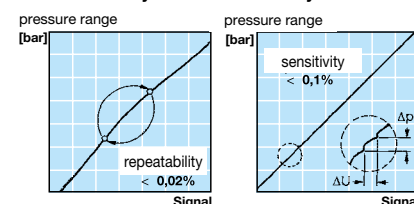


PM . M
mounting on manifold block



linearity

hysteresis



repeatability

sensitivity

*1 at 7 bar supply pressure and open outlet, at regulated flow rate of 3 l/min
*2 higher supply pressures on request

For further details about double loop see PQ2

PDF CAD
www.aircom.net

* Product group



Order example:
PM1DE-A5